



Highlights

For Laptop Computer Users

- Burn more calories by choosing to stand for periods of your work-day; periodic standing also promotes greater bone density and better sleep at night
- Safe, easy to use—simple installation and effortless operation
- Patented Constant Force lift technology provides easy adjustment
- Can be used as a supplementary surface for writing, drawing with a pen tablet, or placing reference materials nearby

For IT and Facilities Staff

- Flexible, open-architecture design is scalable for future computer equipment
- Modify existing office spaces or cubes by simply clamping a WorkFit on an existing worksurface, or mount through a grommet hole, without the cost of expensive professional installers
- Safe and neat routing of cables

For HR/Risk Management and Company Cost Savings

- Manage the cost of healthcare premiums by promoting wellness in the daily work routine
- Provide standing work platforms for employees without having to buy expensive height-adjustable chairs
- Comfortable computing offers provable ROI on investment—healthcare costs associated with unhealthy computing and missed time are reduced while productivity increases

Ergotron®

WorkFit-P Sit-Stand Workstation



Finally: a stand up workstation that also lets you easily sit when using a laptop

Ergotron's WorkFit-P enables an effortless sit-and-stand work style, creating a truly ergonomic platform for prolonged laptop computing to improve health and productivity. Research shows sitting too much isn't healthy, and standing all day is challenging, but freely moving between these positions throughout the day keeps you healthy and productive! Choose WorkFit and sit and stand throughout your day!

Ergotron has over 15 years experience in making sit-stand height adjustable computer systems, and our effortless, tool-free and non-motorized, patented CF height adjustment technology leads the industry.





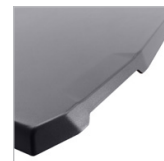
- If using the optional 45-362-026 extension accessory do not rotate arm/extension beyond the back of the desk worksurface area
- Worksurface dimensions: approximately 26" x 18" (66 cm x 45,7 cm)
- Desk clamp attaches to edge up to 2.5" (66 mm) thick
- Grommet mount attaches through hole 0.5–2.5" (7–51 mm) wide and up to 2.5" (66 mm) thick
- Patented Constant Force (CF) lift-and-pivot motion technology
- Cable management clips on the under side of the mount arm routes and hides wires
- Includes complete hardware kit



Desk clamp



Grommet mount



Surface handle



Height adjustment



Product Name	WorkFit-P Sit-Stand Workstation
Part Number	24-383-926 (polished aluminum/black)
Product Includes	Arm, worksurface, desk clamp, grommet mount, assembly fasteners, adjustment tools
Weight Capacity	5–15 lbs (2,3–6,8 kg)
Lift Range of Worksurface	20" (51 cm)
Pan	180°
Rotation of Arm Around Pole	360°
Shipping Dimensions	34" x 20.75" x 7.5" (86,4 x 52,7 x 19 cm)
Shipping Weight	25 lbs (11,4 kg)
Warranty	5 years

© 2013 Ergotron, Inc. rev. 06/04/2013/EA Literature made in US Content is subject to change without notification

Americas Sales and Corporate Headquarters

St. Paul, MN USA
 (800) 888-8458
 +1-651-681-7600
 www.ergotron.com
 sales@ergotron.com

EMEA Sales

Amersfoort, The Netherlands
 +31 33 45 45 600
 www.ergotron.com
 info.eu@ergotron.com

APAC Sales

Tokyo, Japan
 www.ergotron.com
 apaccustomerservice@ergotron.com

Worldwide OEM Sales

www.ergotron.com
 info.oem@ergotron.com

